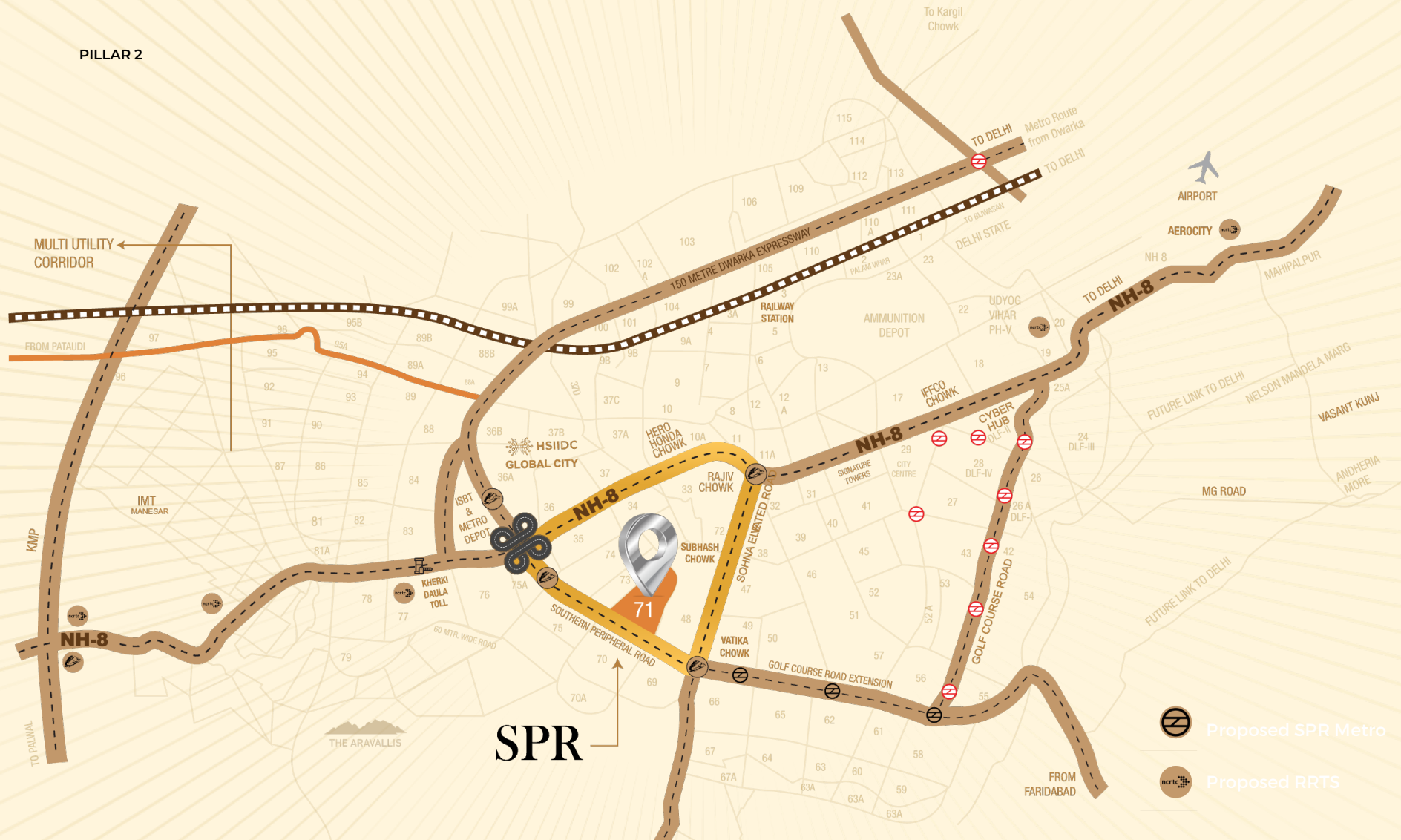
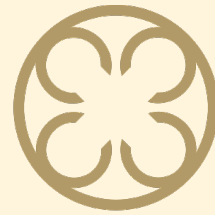


PILLAR 2





CLOVERDALE

SPR



SIGNATURE GLOBAL – A LISTED COMPANY





DP Consultants (DPC) is a specialist Project Management Consultancy in Singapore, established in 1981, renowned for delivering complex, large-scale developments with precision and efficiency. Their mission is to translate client visions into reality through sound management practices.



Resorts World Sentosa (RWS), Singapore

DPC was the Project Lead Consultant for Resorts World Sentosa (RWS), a 490,000 sqm integrated resort with Southeast Asia's first Universal Studios, Marine Life Park, luxury hotels, and a casino. DPC managed the entire process, from design coordination to construction, overseeing 100+ subcontracts and works packages. Their efficient program management and innovative approach ensured the timely completion of RWS's hotels and hospitality components, despite a compressed timeline.

Role in Cloverdale SPR

As collaborators in the Cloverdale SPR project, DPC brings their extensive experience in managing large-scale developments, ensuring that the project is delivered with the same level of excellence and precision that has characterized their past successes.



MPFP

MPFP is an internationally acclaimed landscape architecture and urban design firm in New York, with over 65 years of experience. They are recognized for transforming urban spaces into vibrant, functional landscapes that enhance community life.



The Yards Park, Washington D.C., USA

MPFP played a pivotal role in the design of The Yards Park, a revitalized waterfront park featuring interactive water features, green spaces, and pedestrian pathways. The park has become a central gathering place, fostering community engagement and environmental sustainability.

Role in Cloverdale SPR

In the Cloverdale SPR project, MPFP's expertise in landscape architecture ensures the creation of spaces that are not only aesthetically pleasing but also functional and sustainable, enhancing the overall quality of the development.



Collaborators in Excellence



Confluence

Specializing in architecture, sustainability, and engineering, Confluence integrates research and strategy to deliver unique, sustainable, and innovative projects.



NMP DESIGN
PRIVATE LIMITED
Landscape Architecture & Urban Planning
Nandita Parikh

With a focus on landscape and urban planning, NMP Design delivers outstanding designs enhancing environments through thoughtful integration with architecture and addressing climate and aesthetics.



OPTIMUM
DESIGN

Specializing in structural engineering, Optimum Design delivers innovative yet economical solutions, catering to projects of all sizes and complexities with optimized performance for over 25 years.



SANELAC

Senelac Consultants Pvt. Ltd. provides end-to-end MEP solutions for Signature Global, ensuring efficient, sustainable systems across all project types.



VINTECH
CONSULTANTS
CONSULTING ENGINEERS
& PROJECT MANAGERS
ISO 9001:2015

Internationally recognized for structural design excellence, VINTECH provides personalized, quality services, pushing boundaries with innovative engineering solutions, accredited for its diversified and refined designs.



aeon
Integrated Building Design Consultants Ltd.

AEON Integrated is a leading MEP and sustainability consultancy with 25+ years of experience and 2000+ projects delivered across India.



Cloverdale SPR

is ideally situated along the South Peripheral Road (SPR),
Gurugram's fast-developing growth zone.



Links Golf Course Extension Road,
NH-48, Rajiv Chowk, and Delhi.



Near offices of PepsiCo, Amex,
Cairn, Deloitte, and more.



Close to Dwarka Expressway,
NH-48, and upcoming CPR.



Planned metro and
road upgrades are underway.





An Exquisite Address Elevates Location to Unmatched Luxury.



Well connected to National Highway 48



Strong growth driven by infrastructure and corporate activity.



10 minutes' drive from the Golf Course



30 minutes' drive to IGI Airport via Dwarka Expressway



15 minutes' drive from Cyber Hub



Luxury is etched into every inch.

- Creating elevated living experiences through design and space.
- A grand entrance that sets the tone for elevated living.
- Private clubhouse exclusively for Iconic Tower residents.
- Expansive balconies with skyline views 42,000 sq. Ft. of indulgent club amenities spread across 3 levels.



Artistic Impression



SIGNATURE GLOBAL – A LISTED COMPANY

**SIGNATURE
GLOBAL**
REALTY. RELIABILITY. RESPONSIBILITY.

A well-composed neighbourhood

- Spread across approximately 8 acres
- 6 Towers: 5 residential + 1 Iconic
- G+35 Towers Height
- 3-level Basement parking
- Thought tower orientation for natural light and views
- 2 to a core and 4 to a core configuration



Artistic Impression



SIGNATURE GLOBAL – A LISTED COMPANY





LAP POOL

Artistic Impression



5-TIER SECURITY

Artistic Impression



SIGNATURE GLOBAL – A LISTED COMPANY





ICONIC

The Crown Jewel of Cloverdale SPR

Set apart in both placement and presence, the Iconic Tower stands as the singular, most premium tower within the 8-acre expanse of Cloverdale SPR. With a separate entry, exclusive facilities, and limited-edition residences, it offers an experience reserved for a discerning few.



Artistic Impression



A Signature of True Luxury

This isn't just a premium tower.

It's a statement of stature.

A rare offering that brings together limited inventory, distinctive design, and a private lifestyle - all within the larger framework of a modern township.



SIGNATURE GLOBAL – A LISTED COMPANY





Artistic Impression



SIGNATURE GLOBAL – A LISTED COMPANY



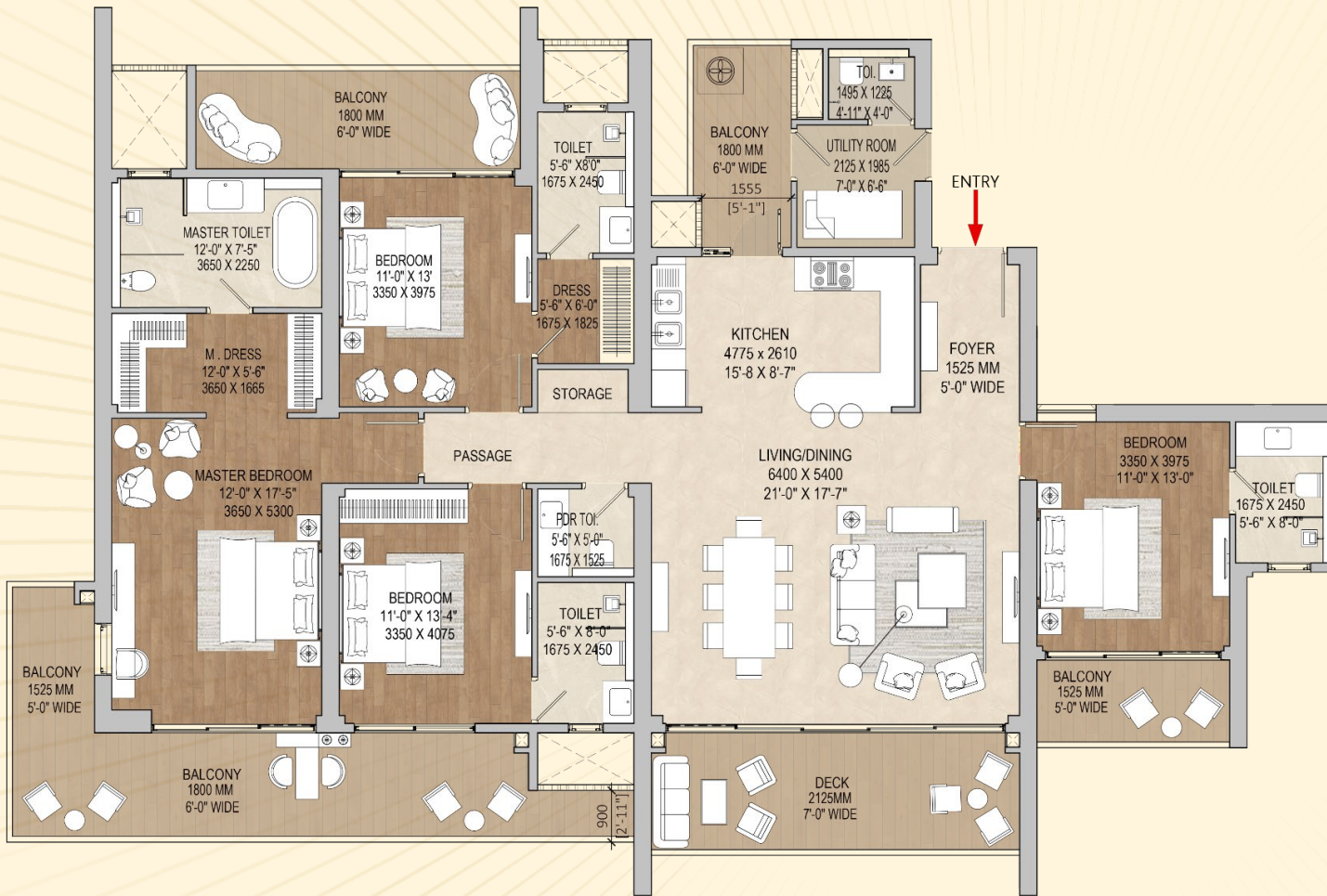
Floor Plans + Site Plans

A detailed vision of your future home.



SIGNATURE GLOBAL – A LISTED COMPANY





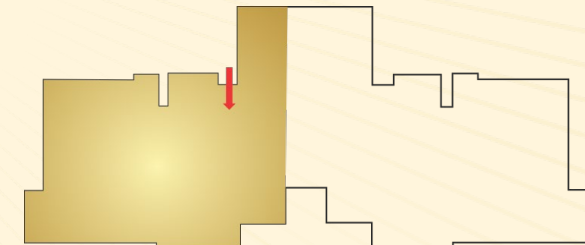
4 BHK + UTILITY
T1 - Iconic

4 Bedrooms + 4 Toilets

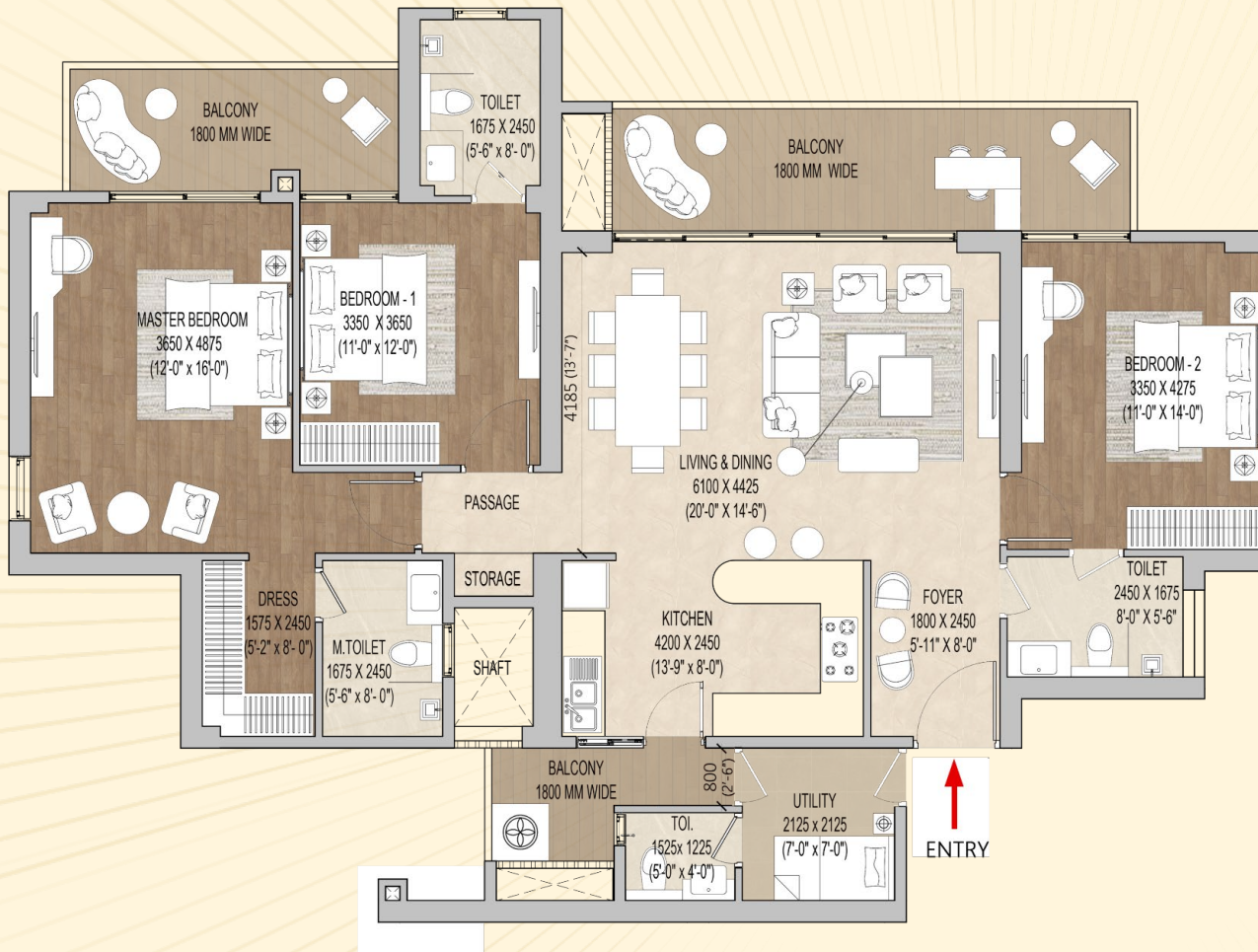
Living + Dining + Kitchen

Powder Room + Master Dress Room

Entrance Foyer



*Plot not to scale
 Disclaimer: It should be noted that the information contained herein may have certain technical inaccuracies or typographical errors, and while the Promoter Company does not doubt the Unit Plan's accuracy, no guarantee or warranty or representation as to its accuracy and completeness is being made by the Promoter Company. Unit Plan(s)/ Site Plan/ Layout Plan is/ are intended to give a specific view of the layout only. Minor inaccuracies in square footage and inaccuracies in layout and room dimensions as shown on any Plan will not excuse the Allottee from completing the purchase of the Unit without abatement in price and/ or recourse against the Promoter Company. Further, Site plans, layout plans, landscaping, dimensions and Specification(s) are not deemed or intended to form part of any contract or warranty unless specifically incorporated in writing into the contract and signed by the parties to it. For the purpose of this Project, 1 Hect. = 2.471 Acres, 1 Acre = 4840 sq.yds. or 4046.864 sq. mtrs., 1 sq.mtr. = 10.764 sq.ft.



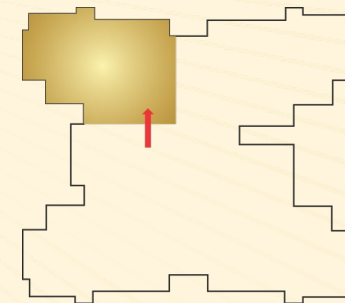
3 BHK + Utility T9, T10

3 Bedrooms + 3 Toilets

Living + Dining + Kitchen

Utility Room + Dress Room

Entrance Foyer



*Plot not to scale
Disclaimer: It should be noted that the information contained herein may have certain technical inaccuracies or typographical errors, and while the Promoter Company does not doubt the Unit Plan's accuracy, no guarantee or warranty or representation as to its accuracy and completeness is being made by the Promoter Company. Unit Plan(s)/ Site Plan/ Layout Plan is/ are intended to give a specific view of the layout only. Minor inaccuracies in square footage and inaccuracies in layout and room dimensions as shown on any Plan will not excuse the Allottee from completing the purchase of the Unit without abatement in price and/ or recourse against the Promoter Company. Further, Site plans, layout plans, landscaping, dimensions and Specification(s) are not deemed or intended to form part of any contract or warranty unless specifically incorporated in writing into the contract and signed by the parties to it. For the purpose of this Project, 1 Hect. = 2.471 Acres, 1 Acre = 4840 sq.yds. or 4046.864 sq. mtrs., 1 sq.mtr. = 10.764 sq.ft.



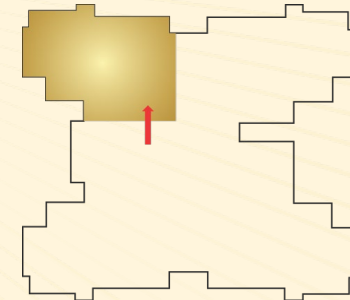


3 BHK
T11, T12 & T14

3 Bedrooms + 3 Toilets
Living + Dining + Kitchen

Dress Room

Entrance Foyer



*Plot not to scale
Disclaimer: It should be noted that the information contained herein may have certain technical inaccuracies or typographical errors, and while the Promoter Company does not doubt the Unit Plan's accuracy, no guarantee or warranty or representation as to its accuracy and completeness is being made by the Promoter Company. Unit Plan(s)/ Site Plan/ Layout Plan is/ are intended to give a specific view of the layout only. Minor inaccuracies in square footage and inaccuracies in layout and room dimensions as shown on any Plan will not excuse the Allottee from completing the purchase of the Unit without abatement in price and/ or recourse against the Promoter Company. Further, Site plans, layout plans, landscaping, dimensions and Specification(s) are not deemed or intended to form part of any contract or warranty unless specifically incorporated in writing into the contract and signed by the parties to it. For the purpose of this Project, 1 Hect. = 2.471 Acres, 1 Acre = 4840 sq.yds. or 4046.864 sq. mtrs., 1 sq.mtr. = 10.764 sq.ft.